

Milesman compact
Is available in the following configurations:

compact

810nm

Permanent and safe results. Removes all kinds of hair specially phototypes I, II, III and IV. Millions of successful cases performed all over the world.

compact blend

755nm, 810nm, 940nm and 1064nm

The only laser that completely and efficiently covers all colors and thicknesses of hair regardless of the depth of the root.

compact alex

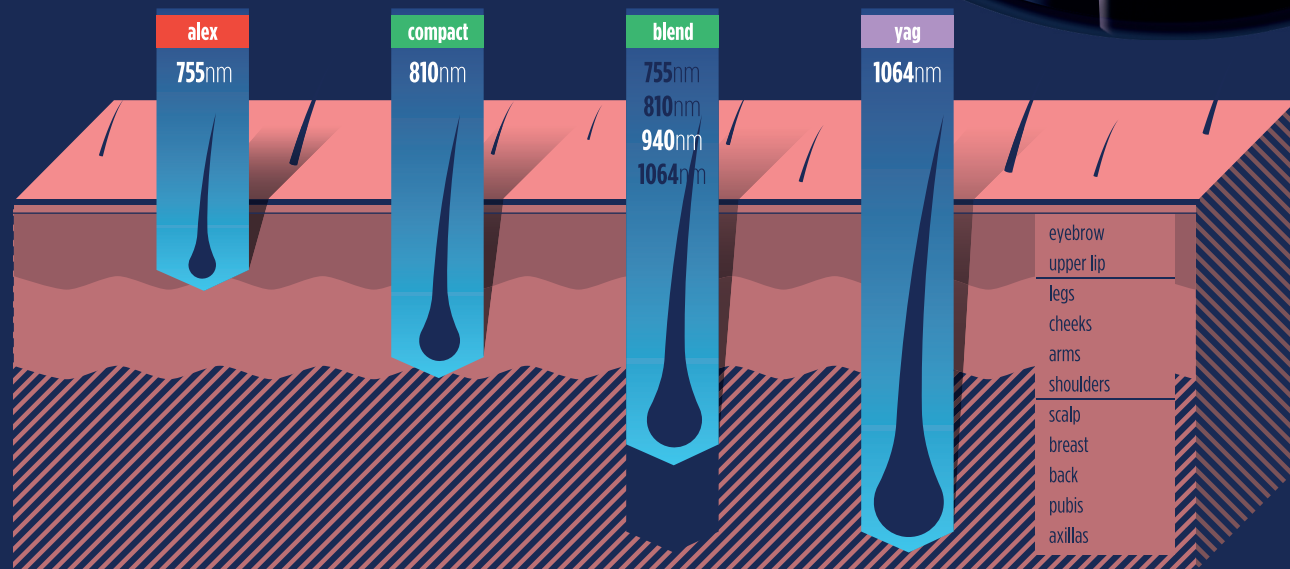
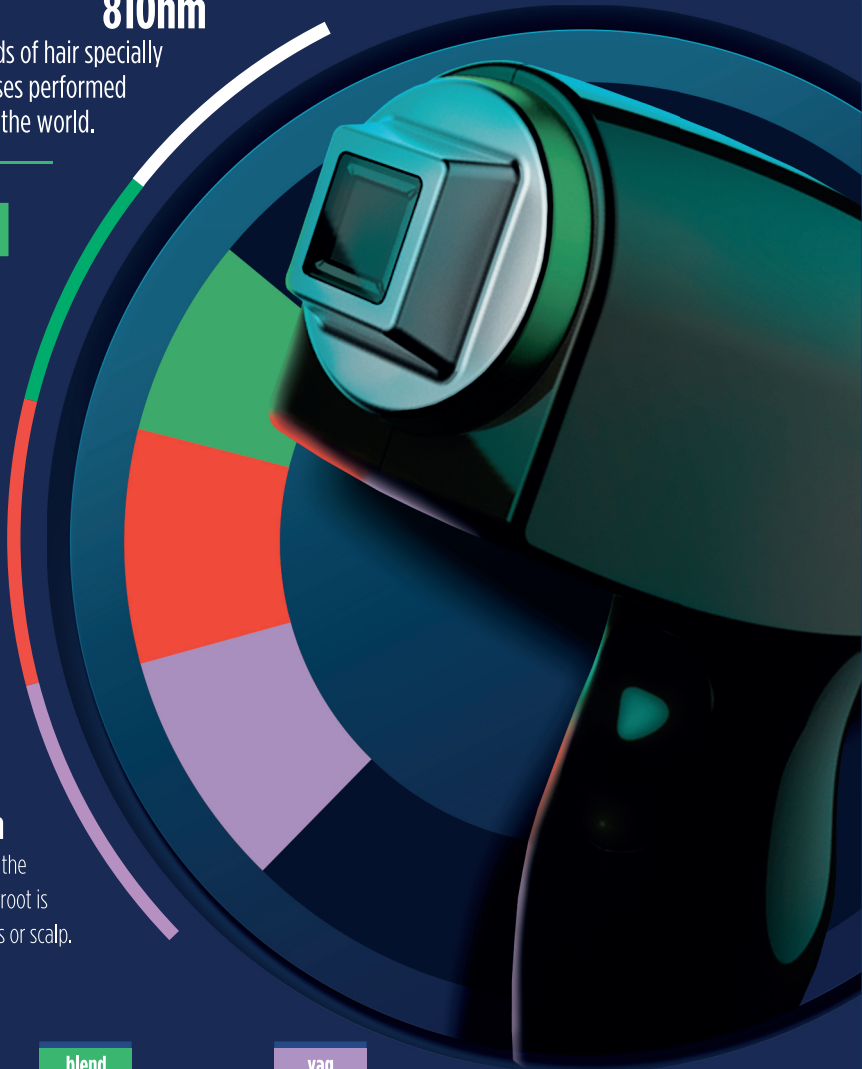
755nm

Maximum absorption of the melanin and the least penetration in the dermis. Perfect for thin and/or light hair or for areas where the root is not deep.

compact yag

1064nm

Less absorption of melanin combined with the maximum penetration in the dermis. Perfect for very dark phototypes and for all type of skin where the root is located in very deep areas such as backs, axillas or scalp.



**All models weigh 9 kg
and have the same size.**

THE
LOT
FRANCHISE

in partnership with
M milesman



THE
LOT
FRANCHISE

in partnership with
M milesman

THE LOT FRANCHISE LTD

5 Hillside Terrace,
Hertford,
United Kingdom,
SG13 8DA
Tel: 07970 712022
Email: neda@laserontour.com

The first high power and portable diode laser

Advantages of the Milesman Compact

- More effective thanks to the VCSEL system which translates to better laser performance
- Faster laser reaching 8 shots per second in the shot by shot mode and 10 shots per second in the sweep mode..
- Ultra-portable laser weighing just 9 kg. (extra cooling unit is not needed).
- Lighter handpiece (50% of the typical handpiece weight).
- Cool tip reaching down to -9°C means the treatment is not painful!

Examples of treatment duration using high power:

- Full legs in 20 minutes.
- Axilas in 5 minutes.

9kg

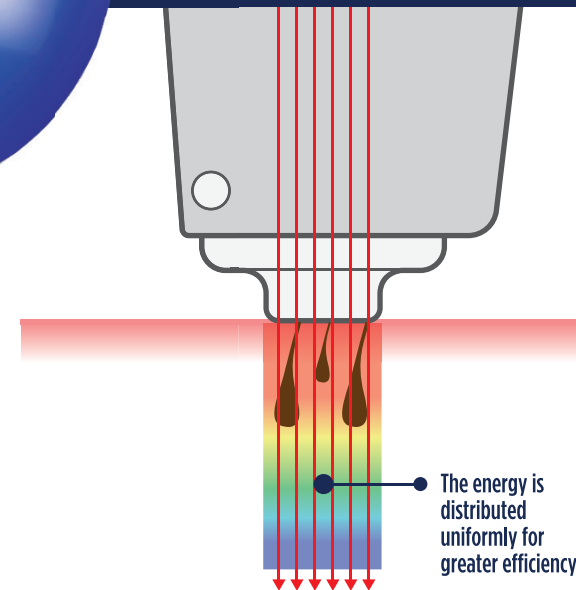
All models weigh just 9 kg and are the same compact size.

Features

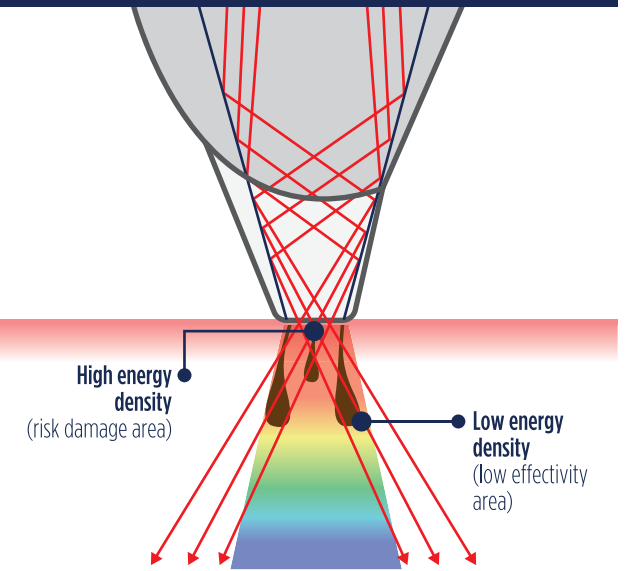
- Wavelength: **810 nm.**
- Repetition Rate "Single shot" mode: **1-2-3-4-5-6-7-8 Hz.**
- Repetition Rate "Sweep" mode: **10 Hz.**
- Spot size: **10 x 10 mm.**
- Maximum fluence: **2000W.**
- Laser Dimensions: **420 x 350 x 230 mm** (Width x Length x Height).
- Laser weight: **9 kg**



Lasers WITH VCSEL systems



Lasers WITHOUT VCSEL systems



Two working modes

Advanced

Complete adjustment of all parameter settings for experienced operators.

Guided

Preset parameter configurations for new users or operators looking for assistance in treatment setup.



Milesman compact

High power laser (20-30 J/cm²) with pulse length **under** 30 ms

Other lasers and IPLs

Low power laser (less than 20 J/cm²) and/or with pulse length **over** 30 ms

TIME BETWEEN SESSIONS 2-3 MONTHS	TIME BETWEEN SESSIONS 1 MONTH
STEM CELLS, HAIR REGENERATION DISABLED	STEM CELLS, HAIR REGENERATION PARTIALLY DISABLED
RESULTS HAIR IS DEFINITELY REMOVED	RESULTS HAIR BECOMES THINNER
REQUIRED SESSIONS 5-7 SESSIONS	REQUIRED SESSIONS MORE THAN 9 SESSIONS